



RED

BT RF TEST REPORT

Prepared for :

ShenZhen IPEGA Electronics Technology Co., Ltd.
1-3/F, Building 4A, Block 88, Long Wang Miao Industrial Zone, Bai Shi Xia,
Fuyong Street, Bao'an District, Shenzhen City, China

Product Name: Wireless Game Controller
Model No.: PG-9076, PG-9068, PG-9077,
PG-9078, PG-9087
Date of Test: Apr. 01, 2018 – Apr. 09, 2018
Date of Report: Apr. 09, 2018
Report Number: HUAK180327168-3ER

Prepared By :

Shenzhen HUAK Testing Technology Co., Ltd.
1F, B2 Building, Junfeng Zhongcheng Zhizao Innovation Park, Heping
Community, Fuhai Street, Bao'an District, Shenzhen, China
TEL: +86-755-2302 9901 FAX: +86-755-2302 9901
E-mail: service@cer-mark.com <http://www.cer-mark.com>



TEST RESULT CERTIFICATION

Applicant's name: ShenZhen IPEGA Electronics Technology Co., Ltd.
Address: 1-3/F, Building 4A, Block 88, Long Wang Miao Industrial Zone, Bai Shi Xia, Fuyong Street, Bao'an District, Shenzhen City, China
Manufacture's Name: ShenZhen IPEGA Electronics Technology Co., Ltd.
Address: 1-3/F, Building 4A, Block 88, Long Wang Miao Industrial Zone, Bai Shi Xia, Fuyong Street, Bao'an District, Shenzhen City, China
Trade Mark: N/A
Product name : Wireless Game Controller
Model number: PG-9076
Family Model number: PG-9068, PG-9077, PG-9078, PG-9087
Rating(s): DC 3.7V From Battery, DC5V, 1A From Micro USB
Standards: ETSI EN 300 328 V2.1.1: 2016-11

This device described above has been tested by HUAK, and the test results show that the equipment under test (EUT) is in compliance with the 2014/53/EU requirements. And it is applicable only to the tested sample identified in the report. This report shall not be reproduced except in full, without the written approval of HUAK, this document may be altered or revised by HUAK, personal only, and shall be noted in the revision of the document.

Date of Test :
Date (s) of performance of tests: Apr. 01, 2018 – Apr. 09, 2018
Date of Issue : Apr. 09, 2018
Test Result : Pass

Prepared by:

Project Engineer

Reviewed by:

Project Supervisor

Approved by:

Technical Director



Contents

1	GENERAL INFORMATION	6
1.1	RESPONSIBLE TESTING LABORATORY	6
1.2	GENERAL DESCRIPTION OF EUT	7
1.3	DESCRIPTION OF FAMILY MODEL NUMBERS.....	8
1.4	ACCESSORIES OF EUT	9
1.5	BLOCK DIAGRAM OF EUT CONFIGURATION FOR TEST.....	9
1.6	TEST ENVIRONMENT CONDITIONS	9
2	MEASUREMENT UNCERTAINTY	10
3	RF OUTPUT POWER.....	11
3.1	TEST EQUIPMENT.....	11
3.2	BLOCK DIAGRAM OF TEST SETUP	11
3.3	LIMITS	11
3.4	TEST PROCEDURE.....	11
3.5	TEST RESULT	11
4	POWER SPECIAL DENSITY.....	12
5	DUTY CYCLE ,TX-SEQUENCE, TX-GAP	12
6	HOPPING SEQUENCE.....	13
6.1	TEST EQUIPMENT.....	13
6.2	BLOCK DIAGRAM OF TEST SETUP	13
6.3	LIMIT	13
6.4	TEST PROCEDURE.....	13
6.5	TEST RESULT	14
7	HOPPING FREQUENCY SEPARATION	15
7.1	TEST EQUIPMENT.....	15
7.2	BLOCK DIAGRAM OF TEST SETUP	15
7.3	LIMITS	15
7.4	TEST PROCEDURE.....	15
7.5	TEST RESULT	15
8	MEDIUM UTILISATION	16
9	ADAPTIVITY	16
10	OCCUPIED CHANNEL BANDWIDTH.....	17
10.1	TEST EQUIPMENT.....	17
10.2	BLOCK DIAGRAM OF TEST SETUP	17
10.3	LIMITS	17
10.4	TEST PROCEDURE.....	17
10.5	TEST RESULT	17
11	TRANSMITTER UNWANTED EMISSIONS IN THE OUT-OF-BAND	18
11.1	TEST EQUIPMENT.....	18
11.2	BLOCK DIAGRAM OF TEST SETUP	18
11.3	LIMITS	18
11.4	TEST PROCEDURE.....	18
11.5	TEST RESULT	19
12	TRANSMITTER UNWANTED EMISSIONS IN THE SPURIOUS.....	20
12.1	TEST EQUIPMENT.....	20



12.2	BLOCK DIAGRAM OF TEST SETUP	20
12.3	LIMITS	20
12.4	TEST PROCEDURE.....	21
12.5	TEST RESULT	21
13	RECEIVER SPURIOUS EMISSIONS	22
13.1	TEST EQUIPMENT.....	22
13.2	BLOCK DIAGRAM OF TEST SETUP	22
13.3	LIMITS	22
13.4	TEST PROCEDURE.....	22
13.5	TEST RESULT	22
14	RECEIVER BLOCKING.....	23
14.1	TEST EQUIPMENT.....	23
14.2	BLOCK DIAGRAM OF TEST SETUP	23
14.3	LIMITS	24
14.4	TEST PROCEDURE.....	24
14.5	TEST RESULT	25
15	TEST SETUP PHOTOGRAPH	26
15.1	RADIATED SPURIOUS EMISSION TEST SETUP.....	26
16	PHOTOS OF THE EUT	27



Test Summary

ETSI EN 300 328 V2.1.1:

Harmonized Standard EN300 328				
The following essential requirements and test specifications are relevant to the presumption of conformity under Article 3.2 of the RED Directive				
No	Test Parameter	Clause No	Condition	Results
Transmitter Parameters				
1	RF Output Power	4.3.1.2 or 4.3.2.2	Apply all equipment	PASS
2	Power Spectral Density	4.3.2.3	Only for equipment using wide band modulations other than FHSS	PASS
3	Duty Cycle ,Tx-Sequence, Tx-gap	4.3.1.3 or 4.3.2.4	Only for non-adaptive equipment	Only for ≥ 10 dBm and non-adaptive
4	Accumulated Transmit time, Frequency Occupation & Hopping Sequence	4.3.1.4	Only for FHSS equipment	Only for ≥ 10 dBm and non-adaptive
5	Hopping Frequency Separation	4.3.1.5	Only for FHSS	Only for ≥ 10 dBm and non-adaptive
6	Medium Utilisation	4.3.1.6 or 4.3.2.5	Only for non-adaptive equipment	Only for ≥ 10 dBm and non-adaptive
7	Adaptive	4.3.1.7 or 4.3.2.6	Only for adaptive equipment	Only for ≥ 10 dBm and non-adaptive
8	Occupied Channel Bandwidth	4.3.1.8 or 4.3.2.7	Apply all equipment	PASS
9	Transmitter unwanted emissions in the OOB domain	4.3.1.9 or 4.3.2.8	Apply all equipment	PASS
10	Transmitter unwanted emissions in the spurious domain	4.3.1.10 or 4.3.2.9	Apply all equipment	PASS
11	Receiver spurious emissions	4.3.1.11 or 4.3.2.10	Apply all equipment	PASS
12	Receiver Blocking	4.3.1.12 or 4.3.2.11	Apply all equipment	PASS
13	Geo-location capability	4.3.1.13 or 4.3.2.12	Only for equipment with geo-location capability	N/A

Note: N/A is an abbreviation for Not Applicable and means this test item is not applicable for this device according to the technology characteristic of device.



1 General Information

1.1 Responsible Testing Laboratory

Shenzhen HUAK Testing Technology Co., Ltd.

Address: 1F, B2 Building, Junfeng Zhongcheng Zhizao Innovation Park, Heping Community, Fuhai Street, Bao'an District, Shenzhen, China



1.2 General Description of EUT

Product Name	Wireless Game Controller	
Model No.(EUT):	PG-9076	
Family Model No.:	PG-9068, PG-9077, PG-9078, PG-9087	
Model Difference	All model's the function, software and electric circuit are the same, only with a product color and model named different. Test sample model: PG-9076.	
Trade Mark:	N/A	
Hardware Version:	V2.0	
Software Version:	V2.0	
Antenna Type:	PCB Antenna for Bluetooth; Max Gain: 0dBi.	
Device Operating Configurations :		
Number of Channels:	79CH	
Modulation Mode:	Bluetooth: GFSK ,π/4DQPSK, 8DPSK	
	Bluetooth	2402-2480MHz



1.3 Description of family model numbers

Between the present Model Number: PG-9076

and the other family Model Number: PG-9068, PG-9077, PG-9078, PG-9087

There are identical as following:

Printed Circuit Board (PCB); Hardware; Software; Enclosure; Internal structure;

There is difference as following:

Model Number and Skin color

1.4 Accessories of EUT

Description	Manufacturer	Model number	Parameter	
/	/	/	/	/

1.5 Block diagram of EUT configuration for test



The test software was used to control EUT work in Continuous TX mode, and select test channel, wireless mode as below table.

Tested mode for Classic mode , channel, information		
Mode	Channel	Frequency (MHz)
GFSK hopping on Tx Mode	CH0 to CH78	2402 to 2480
$\pi/4$ QPSK hopping on Tx Mode	CH0 to CH78	2402 to 2480
8-DPSK hopping on Tx Mode	CH0 to CH78	2402 to 2480
GFSK hopping off Tx Mode	CH0	2402
	CH39	2441
	CH78	2480
$\pi/4$ QPSK hopping off Tx Mode	CH0	2402
	CH39	2441
	CH78	2480
8-DPSK hopping off Tx Mode	CH0	2402
	CH39	2441
	CH78	2480

Note:

For $\pi/4$ QPSK its same modulation type with 8-DPSK, and based exploratory test, there is no significant difference of that two types test result, after the preliminary scan, 8-DPSK will have higher emission, so except output power, all other items final test were only performed with the worse case 8-DPSK and GFSK.

1.6 Test environment conditions

During the measurement the environmental conditions were within the listed ranges:

	Normal Conditions	Extreme Conditions
Temperature range	21-25°C	-20°C and 55°C
Humidity range	40-75%	40-75%
Pressure range	86-106kPa	86-106kPa
Power supply	DC 3.7V	3.33V and 4.07V (0.9 and 1.1 times of nominal voltage)

Note1: The Extreme temperature range and extreme voltages are declared by the manufacturer.



2 Measurement uncertainty

This uncertainty represents an expanded uncertainty expressed at approximately the 95% confidence level using a coverage factor of $k=2$.

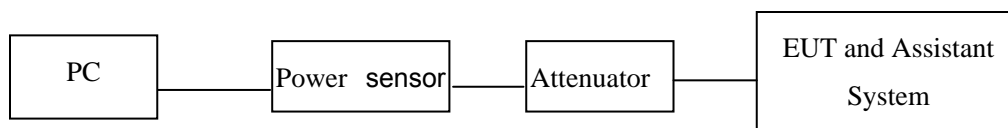
Test Item	Uncertainty
Occupied Channel Bandwidth	$\pm 1\%$
Uncertainty for radio frequency	1×10^{-9}
RF Output power, conducted	$\pm 0.6\text{dB}$
Power Spectral Density, Conducted	$\pm 1.2\text{dB}$
Unwanted Emissions, Conducted	$\pm 0.6\text{dB}$
Temperature	$\pm 0.2^\circ\text{C}$
Humidity	$\pm 1\%$
DC and Low frequency voltage	$\pm 0.5\%$
Time	$\pm 1\%$
Duty Cycle	$\pm 1\%$
Uncertainty for Unwanted Emission, Radiated (30MHz-1GHz)	2.12 dB (Polarize: V)
	2.42 dB (Polarize: H)
Uncertainty for Unwanted Emission, Radiated (1GHz to 13GHz)	2.08dB(Polarize: V)
	2.16dB (Polarize: H)

3 RF Output Power

3.1 Test equipment

Item	Equipment	Manufacturer	Model No.	Serial No.	Last Cal.	Cal. Interval
1	RF automatic control unit	Tonscend	JS0806-2	HKE-060	2017/12/28	1 Year

3.2 Block diagram of test setup



3.3 Limits

The RF output power is defined as the mean equivalent isotropically radiated power (e.i.r.p.) of the equipment during a transmission burst.

The maximum RF output power for adaptive Frequency Hopping equipment shall be equal to or less than 20 dBm.

This limit shall apply for any combination of power level and intended antenna assembly.

3.4 Test Procedure

Connect each EUT's antenna output to power sensor by RF cable and attenuator.

3.5 Test Result

Test Conditions		EUT Mode	Numbers of burst	Measured Highest Pburst Values (dBm)	Antenna Gain (dBi)	RF Output Power (dBm)
Volt	Volt					
DC 3.7V	Noraml	GFSK	10	0.81	0	0.81
		4pi QPSK	10	0.97	0	0.97
		8-DPSK	10	0.78	0	0.78
DC 3.33V	55°C	GFSK	10	0.82	0	0.82
		4pi QPSK	10	0.81	0	0.81
		8-DPSK	10	0.74	0	0.74
DC3.33V	-20°C	GFSK	10	0.75	0	0.75
		4pi QPSK	10	0.73	0	0.73



		8-DPSK	10	0.71	0	0.71
DC4.07V	55°C	GFSK	10	0.67	0	0.67
		4pi QPSK	10	0.72	0	0.72
		8-DPSK	10	0.65	0	0.65
DC4.07V	-20°C	GFSK	10	0.64	0	0.64
		4pi QPSK	10	0.77	0	0.77
		8-DPSK	10	0.53	0	0.53

Note:RF Output power = Measured Highest Pburst Values + Antenna Gain

4 Power Special Density

N/A (Not Applicable)

Only for modulations other than FHSS.

5 Duty Cycle ,Tx-Sequence, Tx-gap

N/A (Not Applicable)

Only for non-adaptive equipment.



6 Hopping Sequence

6.1 Test equipment

Same with 6.1

6.2 Block diagram of test setup

Same with 6.2

6.3 Limit

Adaptive Frequency Hopping systems shall be capable of operating over a minimum of 70 % of the specified band (2400MHz-2483.5MHz)

The hopping sequence(s) shall contain at least N hopping frequencies at all times, where N is 15 or 15 divided by the minimum Hopping Frequency Separation in MHz, whichever is the greater.

6.4 Test Procedure

Connect EUT's antenna output to spectrum analyzer by RF cable and an attenuator.

Set the spectrum analyzer as follows:

Start frequency:	2400MHz
Stop Frequency:	2483.5MHz
RBW:	1 % of the Span
VBW:	3* RBW
Detector Mode:	RMS
Sweep time:	Auto
Trace Mode	Max Hold

When the trace has completed, identify the number of hopping frequencies used by the hopping sequence.

Using the lowest and highest -20 dB points from the total spectrum envelope obtained in step 5, and verified whether the system uses 70 % of the band specified.



6.5 Test result

EUT Set Mode	Hopping sequence Result	EUT Set Mode	hopping sequence Result
GFSK	79	8-DPSK	79
Limit: >15 Conclusion: Pass			

EUT Set Mode	Operation band (-20dB band)(MHz)	EUT Set Mode	Operation band (-20dB band)(MHz)
GFSK	96.29	8-DPSK	97.21
Limit: > 70%*(2400-2483.5MHz)=58.45MHz Conclusion: Pass			



7 Hopping Frequency Separation

7.1 Test equipment

Same with 6.1

7.2 Block diagram of test setup

Same with 6.2

7.3 Limits

For adaptive frequency hopping systems the minimum hopping frequency separation shall be 100 KHz.

7.4 Test Procedure

Connect EUT's antenna output to spectrum analyzer by RF cable and attenuator.

Configure EUT work in normal hopping mode.

Set the spectrum analyzer as follows:

Centre Frequency:	Centre of the two adjacent hopping frequencies
Frequency Span:	Sufficient to see the complete power envelope of both hopping frequencies
RBW:	1 % of the Span
VBW:	3 × RBW
Detector Mode:	Max Peak
Sweep time:	Auto
Trace Mode:	Max Hold

When the trace has completed, Use the marker-delta function to determine the Hopping Frequency Separation between the peaks of the two adjacent hopping frequencies.

7.5 Test Result

EUT Set Mode	Hopping Frequency Separation (MHz)	EUT Set Mode	Hopping Frequency Separation (MHz)
GFSK	1.031	8-DPSK	1.042
Limit: >100KHz Conclusion: Pass			



8 Medium Utilisation

N/A (Not Applicable)

This requirement only applies to non-adaptive equipment, and this reported device is adaptive device.

9 Adaptivity

N/A (Not Applicable)

This requirement does not apply for equipment with a maximum RF Output power level of less than 10 dBm e.i.r.p, and this reported device's maximum e.i.r.p is 0.97 dBm.



10 Occupied Channel Bandwidth

10.1 Test equipment

Same with 6.1

10.2 Block diagram of test setup

Same with 6.2

10.3 Limits

The Occupied Channel Bandwidth for each hopping frequency shall fall completely within the band 2400MHz to 2483.5MHz for this device.

10.4 Test Procedure

Connect EUT's antenna output to spectrum analyzer by RF cable and attenuator.

Configure EUT work in lowest and highest hopping frequency.

Set the spectrum analyzer as follows:

Centre Frequency:	The centre frequency of the channel under test
Frequency Span:	2 × Occupied Channel Bandwidth
RBW:	~ 1 % of the span without going below 1 %
VBW:	3 × RBW
Detector Mode:	Max Peak
Sweep time:	1s
Trace Mode:	Max Hold

When the trace has completed, Use the 99% bandwidth function of the spectrum analyzer to measure the Occupied channel bandwidth of the EUT.

10.5 Test Result

EUT Set Mode	CH	Low 99% bandwidth frequency(MHz)	Upper 99% bandwidth frequency(MHz)	99% Bandwidth(MHz)
GFSK	CH0	2401.506	---	0.725
	CH39	---	---	0.613
	CH78	---	2480.419	0.727
8-DPSK	CH0	2401.261	---	0.824
	CH39	---	---	0.941
	CH78	---	2480.572	0.969
Limit: within the band 2400MHz to 2483.5MHz		Conclusion: Pass		

11 Transmitter unwanted emissions in the out-of-band

11.1 Test equipment

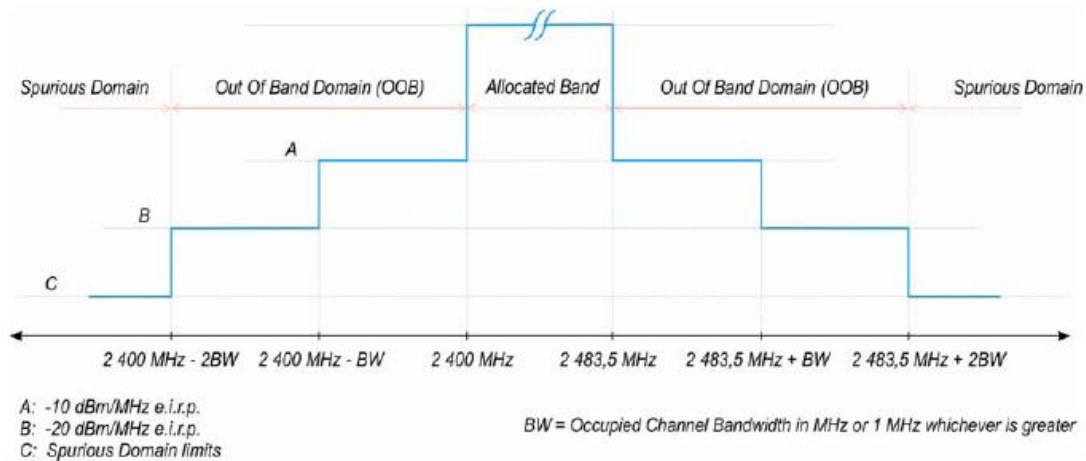
Item	Equipment	Manufacturer	Model No.	Serial No.	Last Cal.	Cal. Interval
1	RF automatic control unit	Tonscend	JS0806-2	HKE-060	2017/12/28	1 Y

11.2 Block diagram of test setup

Same with 6.2

11.3 Limits

The transmitter unwanted emissions in the out-of-band domain but outside the allocated band, shall not exceed the values provided by the mask below:



11.4 Test Procedure

These measurements have to be performed at normal environmental conditions and shall be repeated at the extremes of the operating temperature range.

Connect EUT's antenna output to spectrum analyzer by RF cable and attenuator.

Configure EUT work in normal hopping mode.

Follow the test procedure description in EN 300 328 V2.1.1, measure out each bands e.i.r.p emission ns.



11.5 Test Result

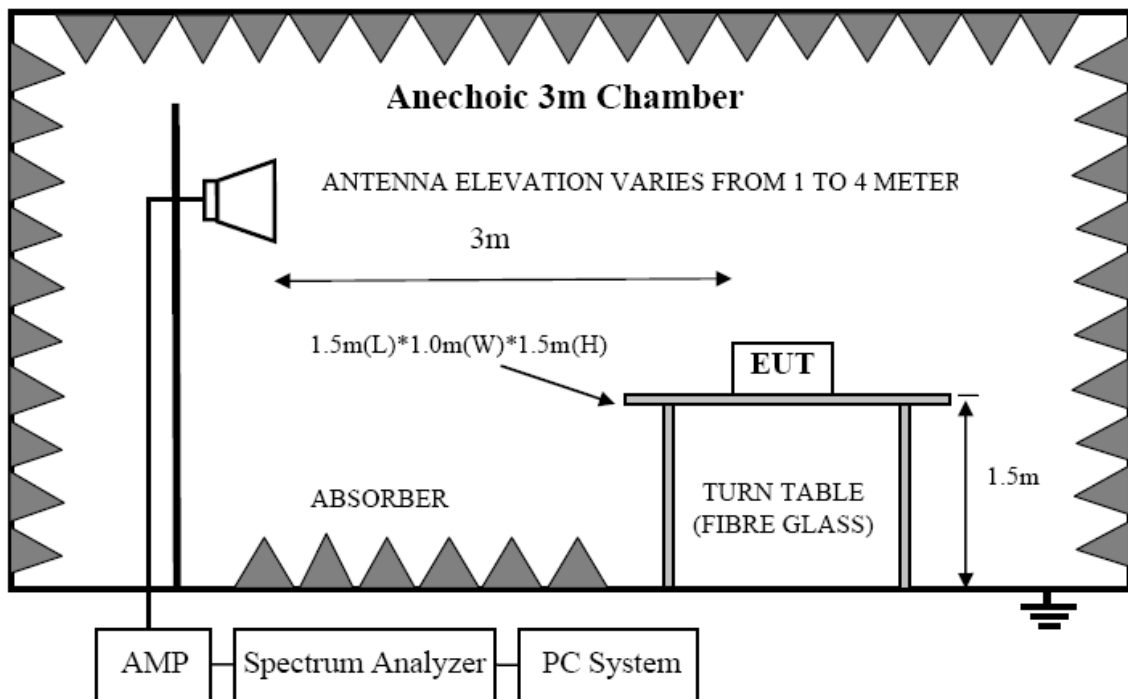
EUT Mode and basic information	Segment (Center Frquency)	Results Maximum Measured Level (dBm)	Limit(dBm)	Conclusion
Test condition: Normal				
GFSK: BW=1MHz	2484MHz	-52.92	-10	PASS
	2485MHz	-58.06	-20	PASS
	2399.5MHz	-44.25	-10	PASS
	2398.5MHz	-54.88	-20	PASS
8-DPSK BW=1.157MHz	2400MHz-BW to 2400MHz	-55.11	-10	PASS
	2400-2BW to 2400-BW	-54.61	-20	PASS
	2483.5MHz to 2483.5MHz+BW	-59.11	-10	PASS
	2483.5MHz+BW to 2483.5MHz+2BW	-54.66	-20	PASS
Test condition: -20°C				
GFSK: BW=1MHz	2484MHz	-53.41	-10	PASS
	2485MHz	-54.38	-20	PASS
	2399.5MHz	-44.75	-10	PASS
	2398.5MHz	-53.48	-20	PASS
8-DPSK BW=1.157MHz	2400MHz-BW to 2400MHz	-60.43	-10	PASS
	2400-2BW to 2400-BW	-54.73	-20	PASS
	2483.5MHz to 2483.5MHz+BW	-63.97	-10	PASS
	2483.5MHz+BW to 2483.5MHz+2BW	-59.26	-20	PASS
Test condition: 55°C				
GFSK: BW=1MHz	2484MHz	-52.29	-10	PASS
	2485MHz	-55.54	-20	PASS
	2399.5MHz	-47.81	-10	PASS
	2398.5MHz	-55.59	-20	PASS
8-DPSK BW=1.157MHz	2400MHz-BW to 2400MHz	-55.59	-10	PASS
	2400-2BW to 2400-BW	-55.49	-20	PASS
	2483.5MHz to 2483.5MHz+BW	-61.06	-10	PASS
	2483.5MHz+BW to 2483.5MHz+2BW	-60.97	-20	PASS

12 Transmitter unwanted emissions in the spurious

12.1 Test equipment

EMI Test Receiver	R&S	ESCI-7	HKE-010	2017/12/28	1Year
Spectrum analyzer	Agilent	N9020A	HKE-048	2017/12/28	1Year
Trilog Broadband Antenna	Schwarzbeck	VULB9163	HKE-011	2017/12/28	1 Year
Broadband antenna	Schwarzbeck	VULB 9163	HKE-012	2017/12/28	1 Year
Horn antenna	Schwarzbeck	9120D	HKE-013	2017/12/28	2 Year
Preamplifier	EMCI	EMC051845SE	HKE-015	2017/12/28	1 Year
Preamplifier	Agilent	83051A	HKE-016	2017/12/28	1Year
Radiated test software	Tonscend	TS+Rev 2.5.0.0	HKE-082	/	/

12.2 Block diagram of test setup



12.3 Limits

The transmitter unwanted emissions in the spurious domain shall not exceed the values given in below table.

Frequency range	Maximum power, e.r.p. (≤ 1 GHz) e.i.r.p. (> 1 GHz)	Bandwidth
30 MHz to 47 MHz	-36 dBm	100 kHz
47 MHz to 74 MHz	-54 dBm	100 kHz
74 MHz to 87,5 MHz	-36 dBm	100 kHz
87,5 MHz to 118 MHz	-54 dBm	100 kHz
118 MHz to 174 MHz	-36 dBm	100 kHz
174 MHz to 230 MHz	-54 dBm	100 kHz
230 MHz to 470 MHz	-36 dBm	100 kHz
470 MHz to 862 MHz	-54 dBm	100 kHz
862 MHz to 1 GHz	-36 dBm	100 kHz
1 GHz to 12,75 GHz	-30 dBm	1 MHz

12.4 Test Procedure

- (1) EUT was placed on a non-metallic table, 1.5m above the ground plane inside a semi-anechoic chamber.
- (2) Test antenna was located 3m from the EUT on an adjustable mast, and the antenna used as below table.

Test frequency range	Test antenna used
30MHz-1GHz	Trilog Broadband Antenna
1GHz-12.75GHz	Double Ridged Horn Antenna

- (3) Set EUT work in fixed channel transmitting mode.
- (4) All the emissions from 30MHz to 12.75GHz at 3m distance was measured and recorded with receive antenna in both vertical and horizontal and varied from 1 m to 4 m. in height above the reference ground plane, and rotating the turntable obtain the maximum signal strength., the test spectrum analyser was set as below

Frequency band	RBW	VBW	Detector mode
30MHz-1GHz	100KHz	300KHz	Peak
1GHz-12.75GHz	1MHz	3MHz	Peak

Note: For harmonic emissions test a appropriate high pass filter was inserted in the input port of AMP.

- (5) A correction values from a verified site calibration was used to calculate the spurious emissions of EUT.

12.5 Test result

EUT mode	Frequency	Spurious emissions level (dBm)	Limit	Conclusion
GFSK CH0	42.06MHz	-55.83	-36	PASS
	4.804GHz	-44.3	-30	PASS
GFSK CH78	42.12MHz	-55.97	-36	PASS
	4.960GHz	-45.94	-30	PASS
8-DPSK CH0	42.02MHz	-53.56	-36	PASS
	4.804GHz	-45.87	-30	PASS
8-DPSK CH78	34.36MHz	-55.63	-36	PASS
	4.960GHz	-45.87	-30	PASS

Test frequency band: 30MHz-1GHz and 1GHz-12.75GHz

13 Receiver Spurious emissions

13.1 Test equipment

Same with 13.1

13.2 Block diagram of test setup

Same with 13.2

13.3 Limits

The spurious emissions of the receiver shall not exceed the values given in below table.

Frequency range	Maximum power e.r.p. (≤ 1 GHz) e.i.r.p. (> 1 GHz)	Measurement bandwidth
30 MHz to 1 GHz	-57 dBm	100 kHz
1 GHz to 12,75 GHz	-47 dBm	1 MHz

13.4 Test Procedure

Connect EUT's antenna output to spectrum analyzer by RF cable and attenuator.

Configure EUT work in testing mode.

Follow the test procedure description in EN 300 328 V2.1.1, measure out the transmitter unwanted spurious emissions.

13.5 Test result

EUT mode	Frequency	Spurious emissions level (dBm)	Limit	Conclusion
Rx Mode	40.98MHz	-69.12	-57	PASS
	4.904GHz	-58.47	-47	PASS

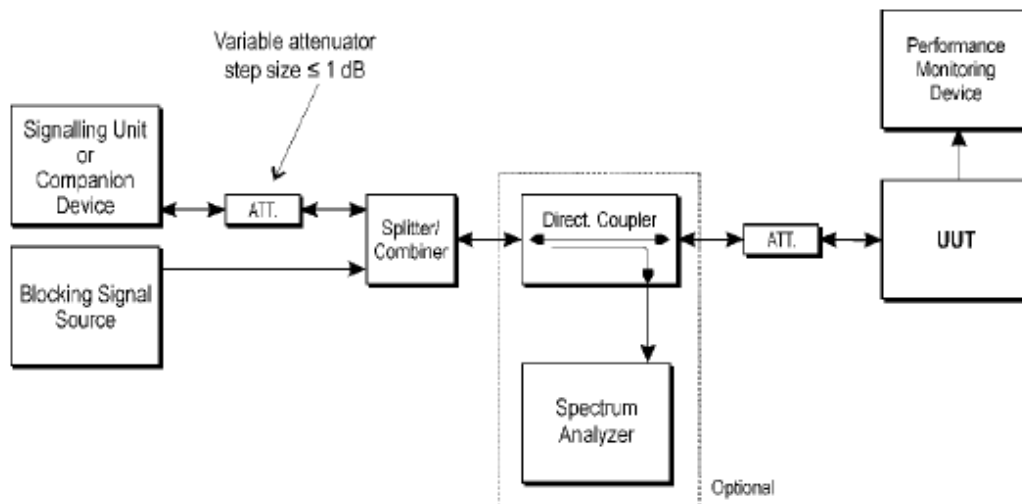
Test frequency band: 30MHz-1GHz and 1GHz-12.75GHz

14 Receiver Blocking

14.1 Test equipment

Item	Equipment	Manufacturer	Model No.	Serial No.	Last Cal.	Cal. Interval
1	Spectrum analyzer	R&S	FSU26	1166.1660.26	2017/12/28	1 Year
2	Wideband Radio Communication tester	R&S	CMW500	155523	2017/12/28	1 Year
3	Vector Signal Generator	Agilent Technologies Inc	E8267D	MY52098743	2017/12/28	1 Year
4	Vector Signal Generator	Agilent Technologies Inc	N5182A	MY48180737	2017/12/28	1 Year
5	Power sensor	Agilent Technologies Inc	U2021XA	1457313	2017/12/28	1 Year
6	Power sensor	Agilent Technologies Inc	U2021XA	1457313	2017/12/28	1 Year
7	DC Power Source	MATRIS	MPS-3005L-3	D813058W	2017/12/28	1 Year
8	Attenuator	Mini-Circuits	BW-S10W2	101109	2017/12/28	1 Year
9	RF Cable	Micable	C10-01-01-1	100309	2017/12/28	1 Year
10	Test Software	JS Tonscend	JS1120-2	Ver.2.5	N/A	1 Year
11	USB Data acquisition	Agilent Technologies Inc	U2531A	TW55043503	N/A	1 Year
12	Auto control Unit	JS Tonscend	JS0806-2	158060010	N/A	1 Year

14.2 Block diagram of test setup



14.3 Limits

Table 7: Receiver Blocking parameters receiver category 2 equipment

Wanted signal mean power from companion device (dBm)	Blocking signal frequency (MHz)	Blocking signal power (dBm) (see note 2)	Type of blocking signal
$P_{\min} + 6$ dB	2 380 2 503,5	-57	CW
$P_{\min} + 6$ dB	2 300 2 583,5	-47	CW

NOTE 1: P_{\min} is the minimum level of the wanted signal (in dBm) required to meet the minimum performance criteria as defined in clause 4.3.1.12.3 in the absence of any blocking signal.

NOTE 2: The levels specified are levels in front of the UUT antenna. In case of conducted measurements, the levels have to be corrected by the actual antenna assembly gain.

Performance Criteria:

The minimum performance criterion shall be a PER less than or equal to 10 %.

14.4 Test Procedure

Refer to ETSI EN 300328 V2.1.1 clause 5.4.11.2.1



14.5 Test Result

Test Mode	Test Channel	Pmin [dBm]	Wanted signal Level[dBm]	Freq [MHz]	CW Level [dBm]	PER [%]	Limit [%]	Verdict
GFSK	2402	52.8	58.8	2583.5	-47	2.70	<=10	PASS
GFSK	2402	52.8	58.8	2503.5	-57	1.84	<=10	PASS
GFSK	2402	52.8	58.8	2380	-57	0.99	<=10	PASS
GFSK	2402	52.8	58.8	2300	-47	0.99	<=10	PASS
GFSK	2480	51.3	57.3	2583.5	-47	0.20	<=10	PASS
GFSK	2480	51.3	57.3	2503.5	-57	0.10	<=10	PASS
GFSK	2480	51.3	57.3	2380	-57	0.10	<=10	PASS
GFSK	2480	51.3	57.3	2300	-47	0.20	<=10	PASS
8DPSK	2402	-50.6	-44.6	2583.5	-47	2.70	<=10	PASS
8DPSK	2402	-50.6	-44.6	2503.5	-57	1.84	<=10	PASS
8DPSK	2402	-50.6	-44.6	2380	-57	0.99	<=10	PASS
8DPSK	2402	-50.6	-44.6	2300	-47	0.99	<=10	PASS
8DPSK	2480	-52.2	-46.2	2583.5	-47	0.20	<=10	PASS
8DPSK	2480	-52.2	-46.2	2503.5	-57	0.10	<=10	PASS
8DPSK	2480	-52.2	-46.2	2380	-57	0.10	<=10	PASS
8DPSK	2480	-52.2	-46.2	2300	-47	0.20	<=10	PASS

15 Test setup photograph

15.1 Radiated Spurious Emission test setup



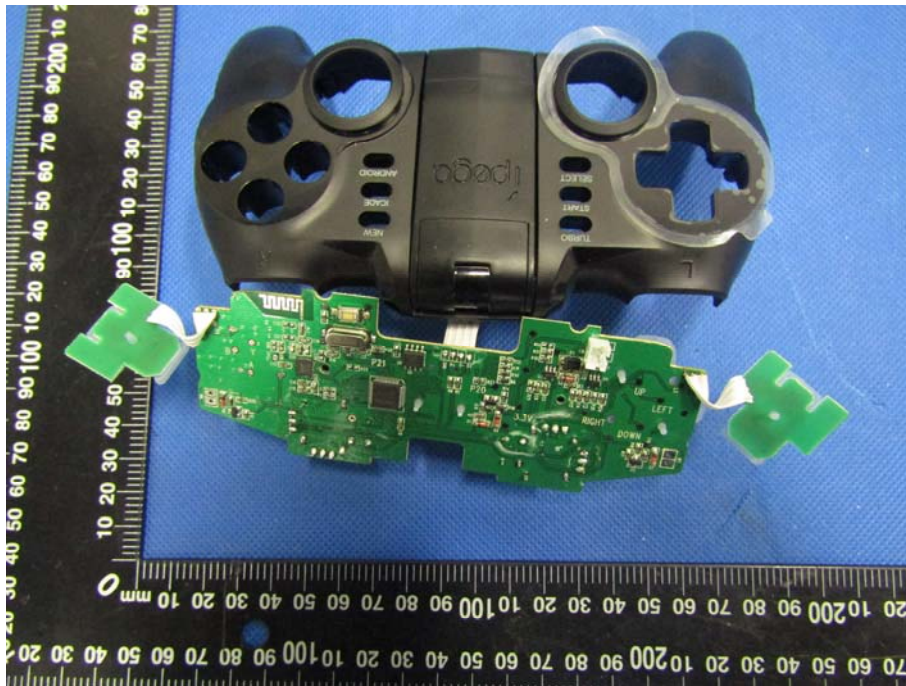
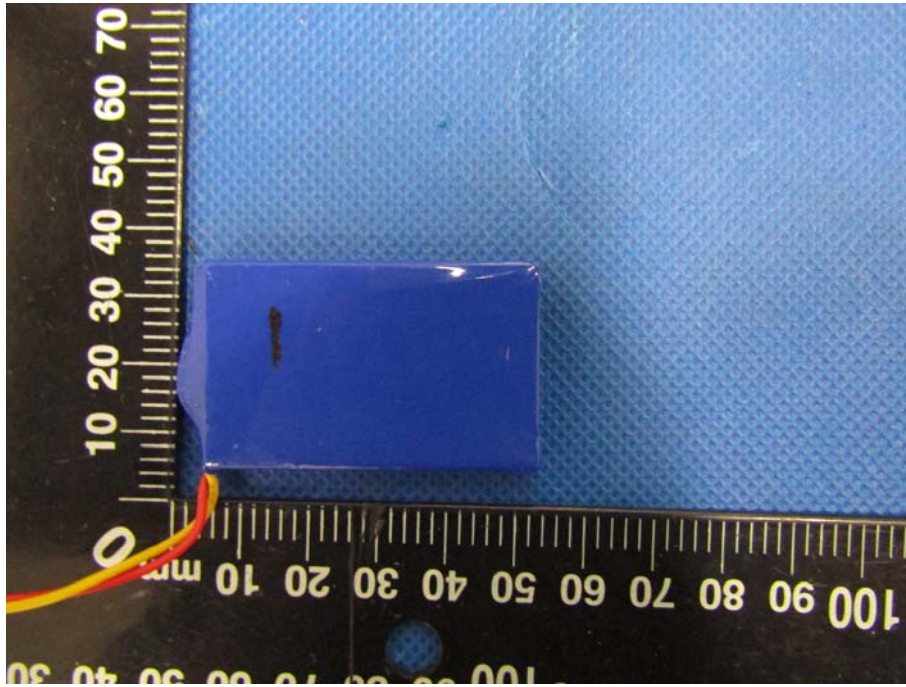
16 Photos of the EUT

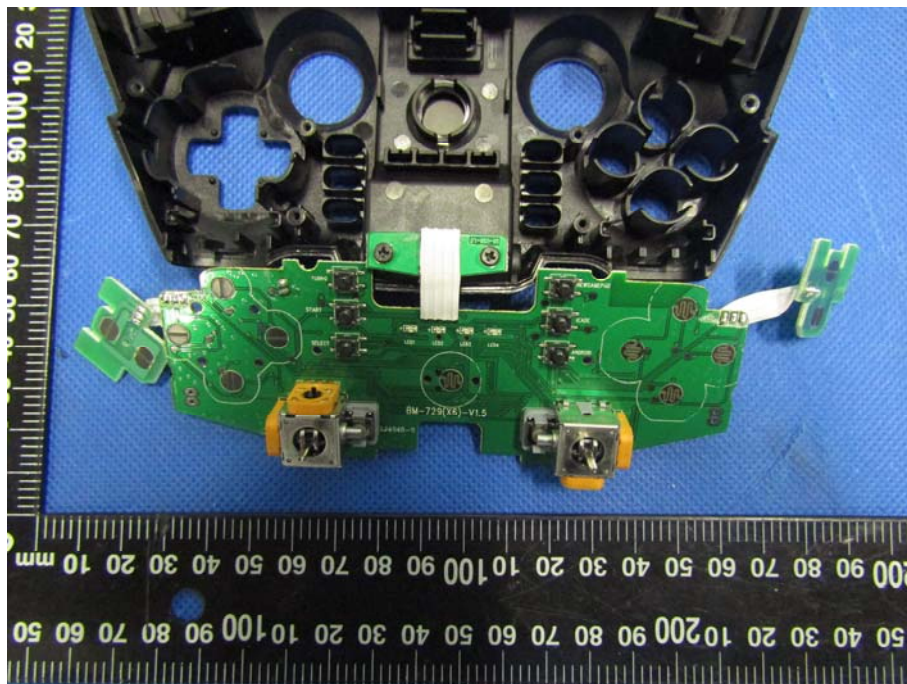












*****THE END*****